

**Apartment Numbers**

---

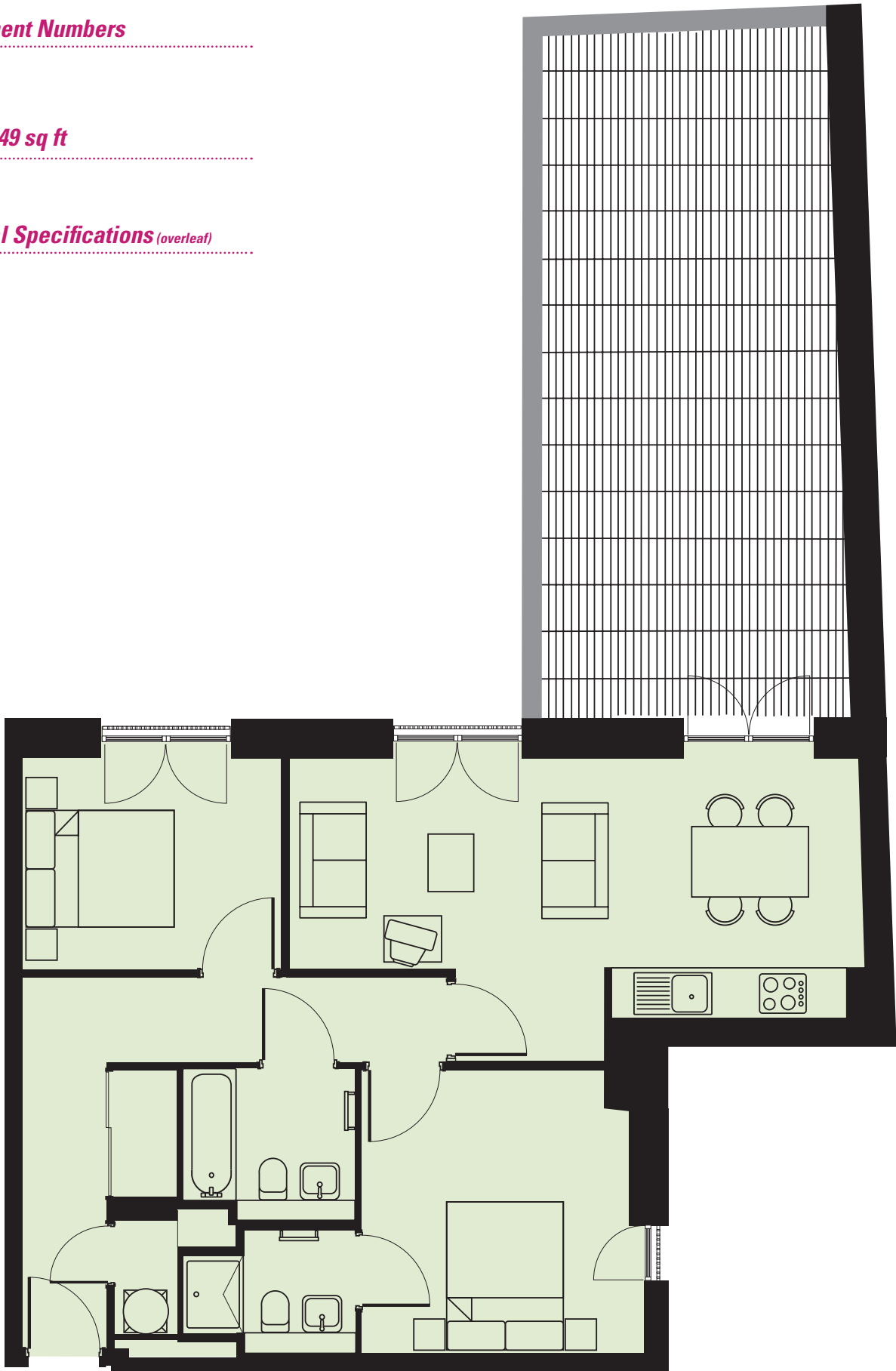
715

**Size: 749 sq ft**

---

**General Specifications** (overleaf)

---





## General Specifications

### Kitchens

Laminate square edged worktop  
Etched mirror glass splashback  
Multifunction stainless steel single oven  
Touch control ceramic hob  
Integrated dishwasher  
Integrated undercounter fridge / freezer  
(some units with fridge / icebox only)  
Integrated re-circulating extractor  
Inset stainless steel sink with chrome monobloc mixer tap

### Bathrooms

Ceramic floor tiles  
Partially tiled walls  
Contemporary white sanitaryware  
Enamelled steel bath  
Shower over bath where no en-suite  
Chrome fittings  
Full width mirror  
Chrome finished heated towel rail  
Shaver point  
Acrylic shower tray in en-suites

### Finishes, Fixtures & Fittings

Timber veneered entrance door  
White painted internal doors  
Brushed stainless steel ironmongery  
White painted walls and ceilings  
Oak finish engineered flooring in hall, kitchen and living area  
Neutral carpet in bedrooms  
Full height storage cupboard in hall  
Utility cupboard  
Recessed lighting in living area and bathrooms  
Electric heating and hot water

### Communal Areas

Audio / visual entry system  
Glazed entrance door  
Double height reception area with natural stone flooring  
24/7 help desk  
Underground car parking available to purchase or rent

### Safe, Clean & Maintained

On site management team responsible for all aspects of day to day maintenance and security of communal areas

### IMPORTANT NOTICE

Savills, their clients and any joint agents give notice that:

1. They are not authorised to make or give any representations or warranties in relation to the property either here or elsewhere, either on their own behalf or on behalf of their client or otherwise. They assume no responsibility for any statement that may be made in these particulars. These particulars do not form part of any offer or contract and must not be relied upon as statements or representations of fact.
2. Any areas, measurements or distances are approximate. The text, photographs and plans are for guidance only and are not necessarily comprehensive. It should not be assumed that the property has all necessary planning, building regulation or other consents and Savills have not tested any services, equipment or facilities. Purchasers must satisfy themselves by inspection or otherwise.
3. This information is prepared from preliminary plans and specifications before the completion of the properties and is intended only as a guide. Changes could be made during construction and final finishes could vary. Prospective purchasers should not rely on this information but must get in contact with their solicitor to check the plans and specification attached to their contract.



### Marketing Suite

14-16 Whitworth Street  
Piccadilly  
Manchester  
M1 3BS

0161 236 0606

[www.thehubmanchester.co.uk](http://www.thehubmanchester.co.uk)